



BOUNDLESS ADVENTURES PARK

30% CONSTRUCTION DOCUMENTS PRESENTATION | MARCH 21, 2023

Project Website:
cofallabilitiespark.org



AGENDA

1. Introductions



formerly known as



2. Review Final Schematic Design

3. Phase 1 Schedule

4. Overview of Current Plan

5. Plan Highlights

6. Building Renovation and Restrooms

7. Next Steps

BOUNDLESS ADVENTURES PARK

FINAL SCHEMATIC DESIGN (SEPTEMBER 2022)



Legend

- ① Assisted Therapy Play
- ② Existing Building
- ③ Bus Drop-Off
- ④ Enclosed Dog Release Area
- ⑤ Urban Navigation Learning Area
- ⑥ Large Group Gathering and Performance Area
- ⑦ Music and Sound Play Area
- ⑧ Bioswale and Riparian Exploration Area
- ⑨ Sensory Engagement Play
- ⑩ Exercise & Therapy Equipment and Outdoor Classroom
- ⑪ Hammocks and Accessible Swing Equipment
- ⑫ Large Play Structure
- ⑬ Small Court Games
- ⑭ Accessible Family Restrooms
- ⑮ Pollinator/Native Plant Gardens
- ⑯ Skate and Wheelchair Waves
- ⑰ Turf Mounds
- ⑱ Outdoor Classroom and Reading & Relaxing Area
- ⑲ Turf Field
- ⑳ Multi-Use Court
- ㉑ Elevated Play Structure

BOUNDLESS ADVENTURES PARK

PHASE 1 SCHEDULE

NOVEMBER 2022 – MARCH 2023

Design Development / 30% Construction Documents (CDs)

- Bridge between schematic design and construction documents
- Set up construction drawings, start to add detail, identify questions

MARCH – JUNE 2023

Construction Documents Phase / 60% CDs

- Add more details
- Get more specific with utilities (including electrical)

JUNE – AUGUST 2023

Construction Documents Phase / 95% CDs and Bid Documents

- Identify final details to address before construction

AUGUST – SEPTEMBER 2023

Final Construction CDs and Bid Documents

SEPTEMBER – NOVEMBER 2023

Bidding Phase

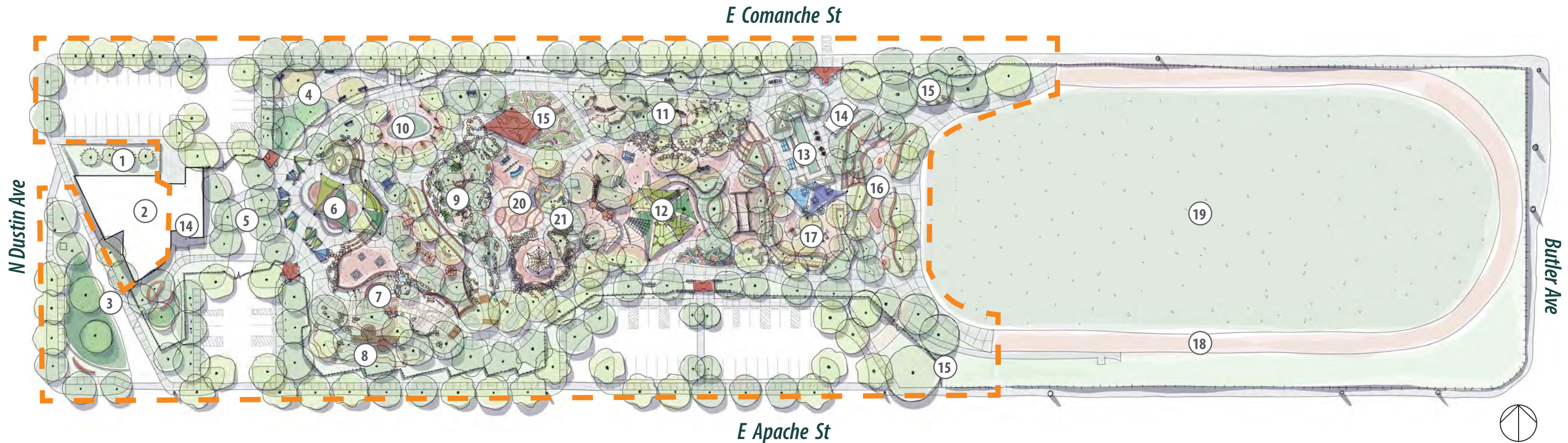
NOVEMBER 2023 – DECEMBER 2024

Construction Phase

Task	Scheduled Completion Date
Design Development Phase 30% CDs	
Consultant and City team kick-off meeting (Zoom)	Week of 11/22/22
Draft linework for site features resolving connections, locations, scale, dimensions, and materials	
Determine critical spot elevations and resolve grading and access	
Draw preliminary planting plan and identify species	
Consultant and City team coordination meeting (Zoom)	Week of 1/9/23 7 weeks
Meet with play equipment reps to discuss concepts	
Prepare preliminary concepts for donor recognition, art, signage, and branding	
Prepare preliminary recommendations for lite lighting, locations, and equipment	
GS prepare DD plans for building renovation and new restroom	
Update preliminary drawings including consultant team needs and City comments	
Incorporate preliminary drawings from play equipment manufacturers	
Prepare a 30% plan cost estimate	
GS submit plans to MRWM	Week of 2/23/23
Meet with City to review 30% plans, equipment, and estimate	Week of 2/27/23 7 weeks
City Plan Review	1 week
Present 30% CDs to Stakeholder Groups	Week of 3/20/23
Present 30% CDs to Council	3/21/23 9:00 am
Prepare notes and update website with progress plans	
Conceptual Design Phase - 65% CDs	
MRWM will meet with consultants to review 30% Plans	Week of 3/27/23
Prepare 65% plans for all site features, grading, planting, irrigation, infrastructure, and equipment	
Prepare 65% plans for play equipment and shade structures	
Continue to refine design of donor recognition, art elements, signage, and branding	
CWE prepare preliminary site utilities and grading plan	
GS prepare 65% building and restroom plans	
Electrical engineer prepare 65% site lighting and electrical plans	
MRWM to Meet with consultants to review progress plans	Week of 4/24/23
Consultants submit plans to MRWM	Week of 5/1/23
Consultant and City team coordination meeting (Zoom)	Week of 5/8/23 9 weeks
MRWM and consultants revise plans	
Prepare a 65% plan cost estimate	
Meet with City to review 65% plans, equipment, and estimate	Week of 5/29/23 3 weeks
Meet with City procurement to coordinate bid document preparation	Week of 5/29/23
Meet with stakeholder groups to review progress and discuss collaboration opportunities	Week of 5/29/23
City Plan Review	Week of 6/05/23 1 week
Prepare notes and update website with progress plans	
Construction Documents Phase - 95% CDs and Bid Documents	
Prepare 95% plans for all site features, grading, planting, irrigation, infrastructure, and equipment	
Prepare 95% plans for play equipment and shade structures	
Continue to refine design of donor recognition, art elements, signage, and branding	
CWE prepare 95% site utilities and grading plan	
GS prepare 95% building and restroom plans	
Electrical engineer prepare 95% site lighting and electrical plans	
Coordinate with City procurement to prepare bid documents	
Consultants submit plans to MRWM	Week of 7/10/23
Consultant and City team coordination meeting (Zoom)	Week of 7/24/23 7 weeks
MRWM and consultants revise plans	
Prepare a 95% plan cost estimate	
Meet with City to review 95% plans, equipment, and estimate	Week of 8/07/23 2 weeks
Meet with City procurement to coordinate 95% bid document preparation	Week of 8/07/23
Meet with stakeholder groups to review progress and discuss collaboration opportunities	Week of 8/07/23
City Plan Review	Week of 8/14/23 1 week
Present 95% CDs to Stakeholder Groups	Week of 8/14/23
Present 95% CDs to Council	8/15/23 9:00 am
Prepare notes and update website with progress plans	
Construction Documents Phase - Final for Construction CDs and Bid Documents	
Prepare Final for Construction plans including all subs	
Prepare final bid documents including final estimate	
Consultants submit plans to MRWM	Week of 8/21/23
Meet with City to review Final for Construction plans, bid documents, and estimate	Week of 9/04/23 3 weeks
Prepare notes and update website with progress plans	
Coordinate with City procurement for advertisement	
Bidding Phase - Construction Phase	
Bid Advertisement	Week of 9/18/23 2 weeks
Pre-bid Meeting	Week of 10/02/23 2 weeks
Bid Opening (Zoom)	Week of 10/16/23 2 weeks
Review bids and prepare recommendation of award	Week of 10/30/23 2 weeks
Execute agreement and issue Notice to Proceed	Week of 11/27/23 4 weeks
Construction Period - 12 months	12/1/2024

BOUNDLESS ADVENTURES PARK

30% RENDERED PLAN: PHASE 1 CONSTRUCTION



Legend

- | | | |
|--|--|-----------------------------------|
| ① Assisted Therapy Play (Phase II) | ⑧ Bioswale and Riparian Exploration Area | ⑮ Pollinator/Native Plant Gardens |
| ② Existing Building | ⑨ Sensory Engagement Play | ⑯ Skate and Wheelchair Waves |
| ③ Bus Drop-Off | ⑩ Exercise & Therapy Equipment and Outdoor Classroom | ⑰ Swings and Group Gathering |
| ④ Enclosed Dog Release Area | ⑪ Hammocks and Accessible Swing Equipment | ⑱ Existing Track to Remain |
| ⑤ Urban Navigation Learning Area | ⑫ Large Play Structure | ⑲ Existing Turf Field to Remain |
| ⑥ Large Group Gathering and Performance Area | ⑬ Small Court Games | ⑳ Sand Play Area |
| ⑦ Music and Sound Play Area | ⑭ Accessible Family Restrooms | ㉑ Elevated Play Structures |

BOUNDLESS ADVENTURES PARK

WEST ENTRANCE & STAGE AREA

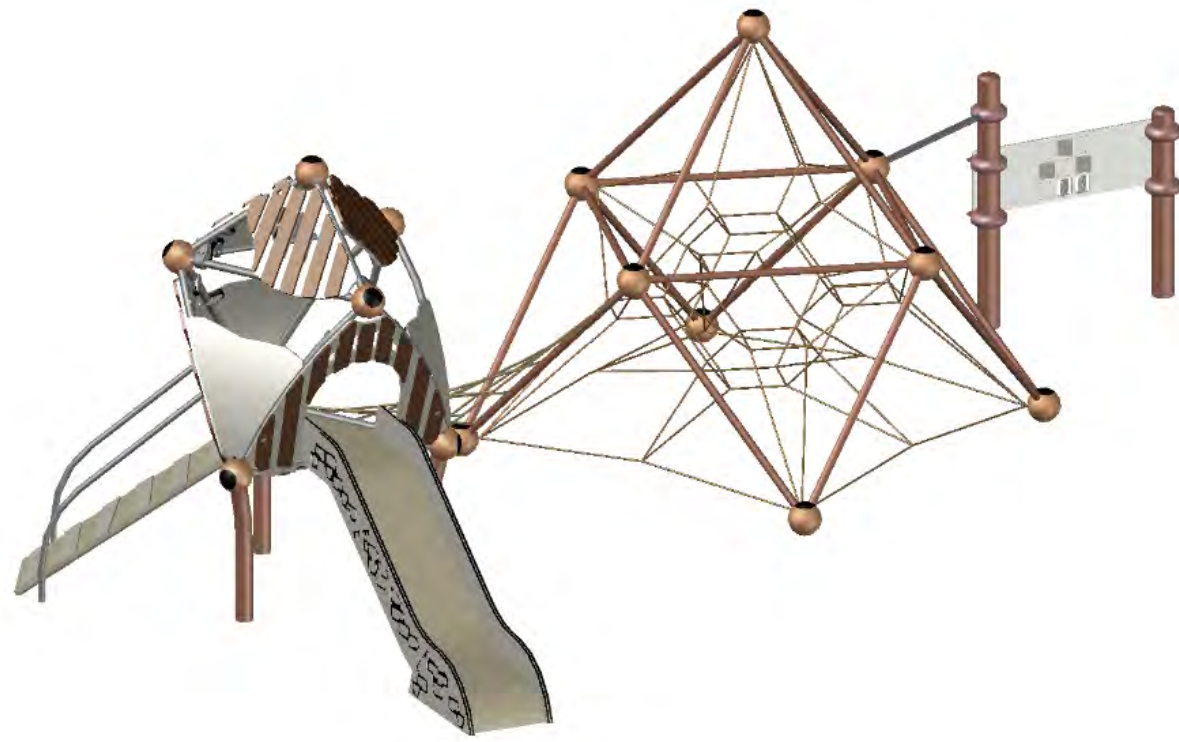
Legend

- ① Existing Building (See Enlargement)
- ② Bus Drop-Off Gathering Area
- ③ Bus Drop-Off Lane
- ④ Trampolines
- ⑤ Entry Feature and Donor Recognition Signage
- ⑥ Double-Gated Entry
- ⑦ Perimeter Fencing
- ⑧ Parking Lot
- ⑨ Stairs
- ⑩ Large Gathering Area/Flexible Use Space with Shade Structure
- ⑪ Urban Navigation Learning Area & Food Truck Parking
- ⑫ Turf/ Outdoor Classroom
- ⑬ Wheelchair-Accessible Swing
- ⑭ Stage
- ⑮ Bench
- ⑯ Enclosed Dog Release Area
- ⑰ Seatwall
- ⑱ Raised Planter
- ⑲ Bioswale and Riparian Exploration Area
- ⑳ Bridge
- ㉑ Music and Sound Play Area
- ㉒ Weeping Rock Accessible Water Encounter
- ㉓ Amphitheater Seating
- ㉔ Family Table
- ㉕ Exercise and Therapy Equipment Loop
- ㉖ Existing Courtyard
- ㉗ Concrete Paving
- ㉘ Ramp
- ㉙ Monument Sign
- ㉚ 2-5 Berliner Slide and Tower Combo
- ㉛ Turf
- ㉜ Whisper Dishes
- ㉝ Sound Wall
- ㉞ Music Instruments
- ㉟ Sound Path



BOUNDLESS ADVENTURES PARK

PLAY EQUIPMENT HIGHLIGHTS



Berliner Slide and Climber Combo for Ages 2-5



Landscape Structures HealthBeat Outdoor Fitness System



Landscape Structures We-Go-Round



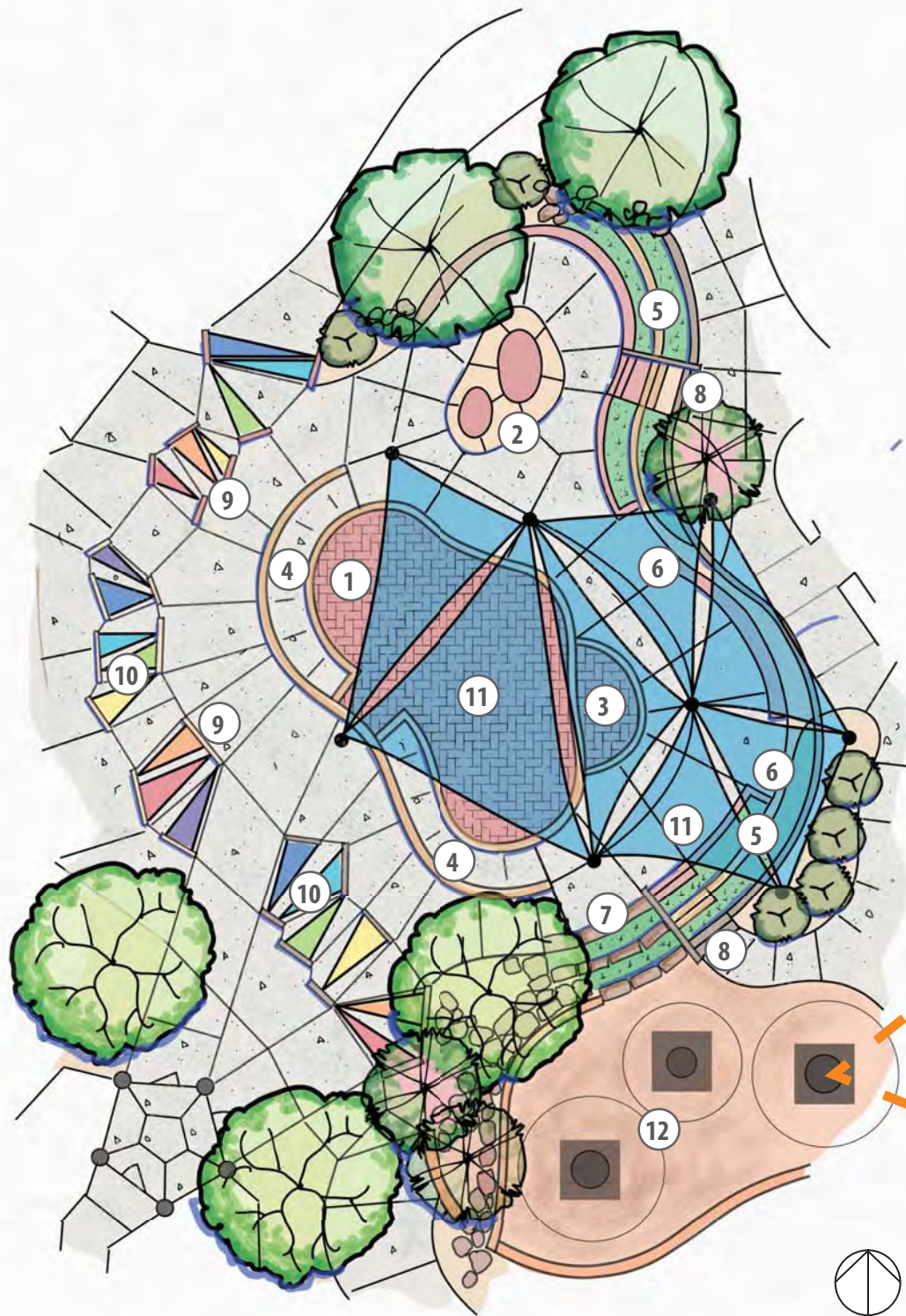
Landscape Structures We-Go-Swing

Key Map



BOUNDLESS ADVENTURES PARK

STAGE AREA ENLARGEMENT



Berliner Bouncers

Legend

- ① Elevated Primary Stage
- ② Elevated Secondary Stage
- ③ At-Grade Stage
- ④ Stage Access Ramp
- ⑤ Terraced Seating with Artificial Turf
- ⑥ Accessible Seating Location
- ⑦ Boulder Terrace Seating
- ⑧ Stairs
- ⑨ Stone Plinths
- ⑩ Translucent Panels
- ⑪ Shade Sails
- ⑫ At-Grade Trampolines

Key Map



BOUNDLESS ADVENTURES PARK

STAGE AREA PRECEDENTS



Downtown Park | Palm Springs, CA



Midland Centennial Park | Midland, TX



BOUNDLESS ADVENTURES PARK

RIPARIAN & SOUND PLAY ENLARGEMENT



Legend

- ① Board Walk
- ② Water Course with Sand Bottom, Cobble Slopes, and Boulders
- ③ Stabilized Crusher Fines Path
- ④ Stone Steppers
- ⑤ Sound Wall with Rhythm Patterns
- ⑥ Wind Chimes
- ⑦ Percussion and Chime Instrument
- ⑧ Whisper Dish
- ⑨ Concrete Bench with Rhythm Patterns
- ⑩ Weeping Rock Water Feature
- ⑪ Water Chimes
- ⑫ Metal Grate Bridge
- ⑬ Rhythm Walk
- ⑭ Concrete Walk

Key Map



BOUNDLESS ADVENTURES PARK

RIPARIAN & SOUND PLAY PRECEDENTS



Headwater at The Comal | New Braunfels, TX



Petroglyph Estates Park | Albuquerque, NM



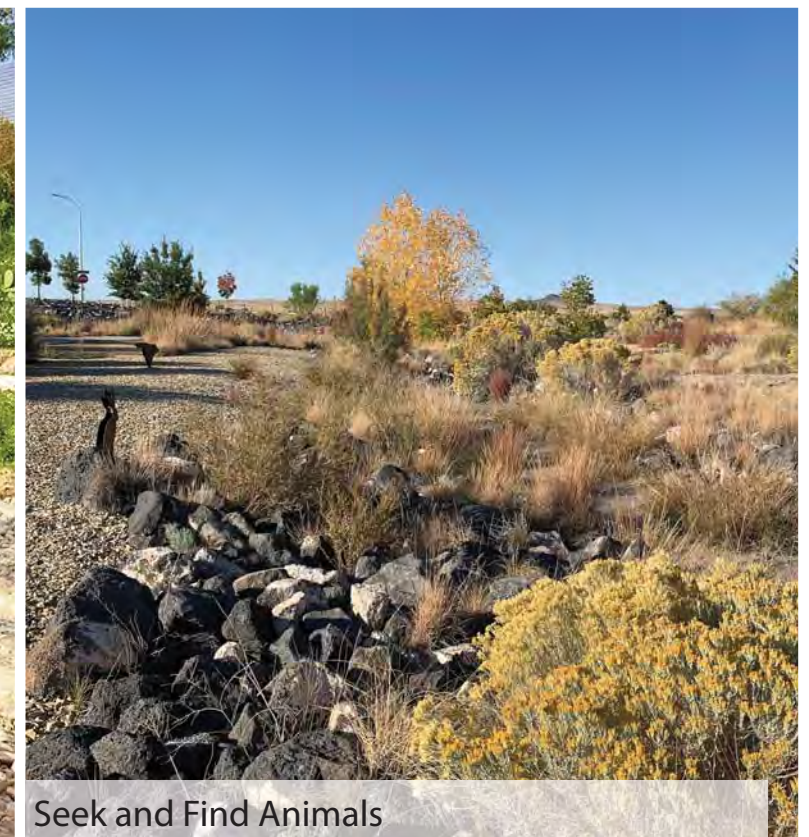
Alliance Children's Park | Austin, TX



Alliance Children's Park | Austin, TX



San Antonio Botanical Garden | San Antonio, TX



Seek and Find Animals

BOUNDLESS ADVENTURES PARK

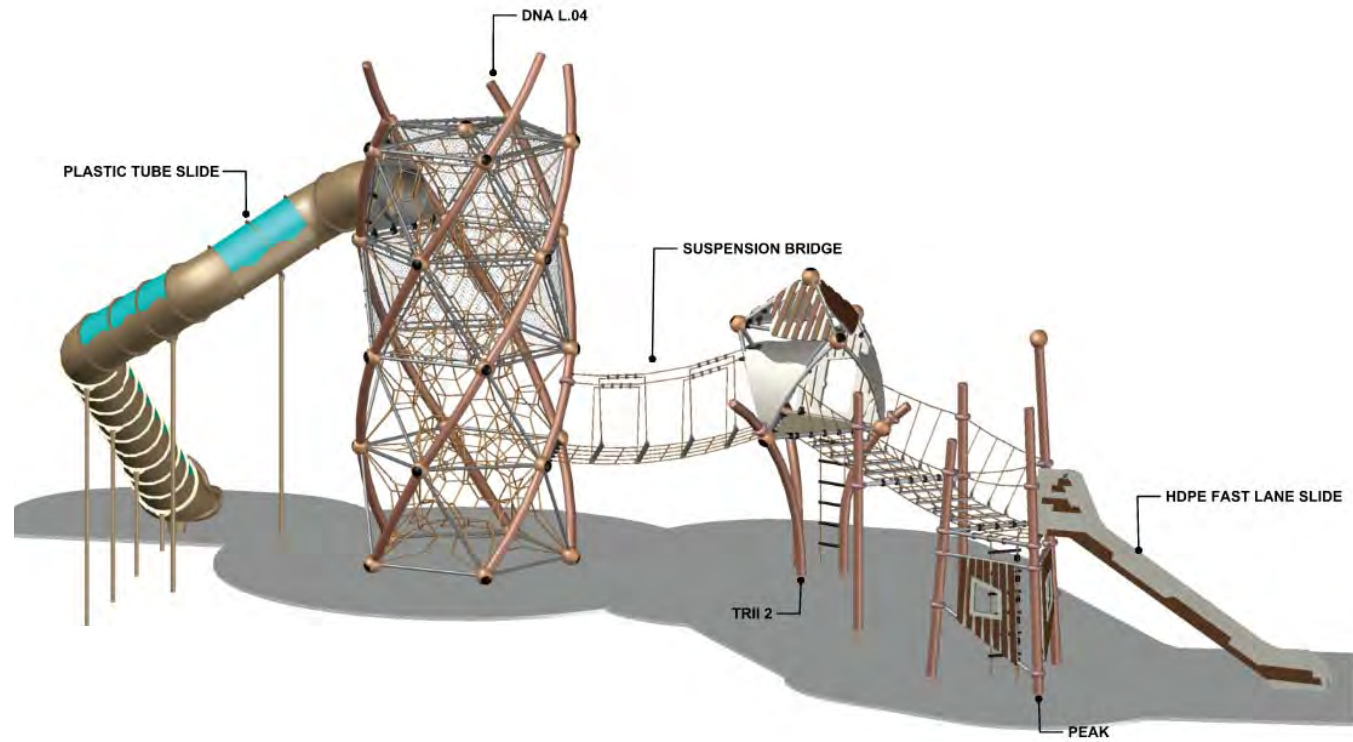
CENTER ENTRANCE & PLAY AREAS

Legend

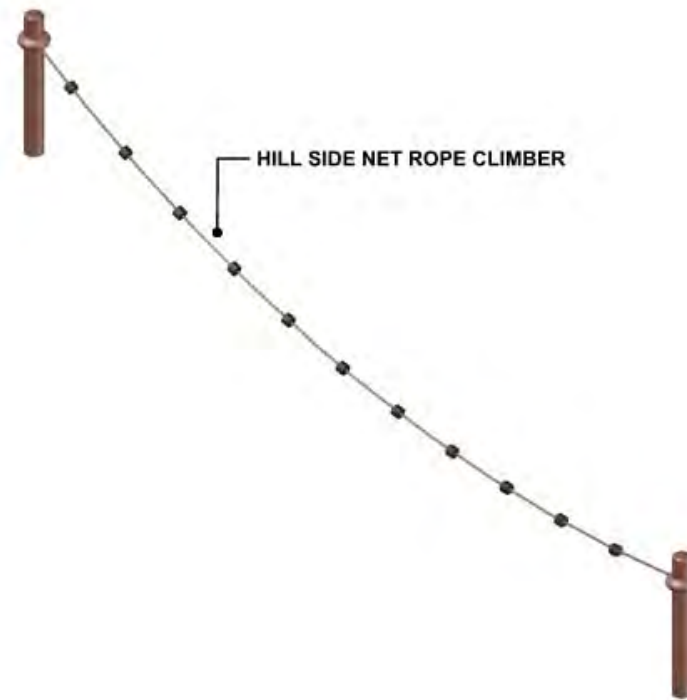
- ① Hammocks and Accessible Swinging Equipment
- ② Gabion Retaining Walls
- ③ Shade Structure with Water Harvesting
- ④ Pollinator Maze
- ⑤ Rock Play
- ⑥ Double-Gated Entry
- ⑦ Perimeter Fencing
- ⑧ Parking Lot
- ⑨ Stairs
- ⑩ Hillside Climber
- ⑪ Sidewalk Culvert
- ⑫ Rock Caves
- ⑬ Toddler Swings
- ⑭ Multi-Level Accessible Sand Play
- ⑮ Willow Tunnels
- ⑯ Embankment Slides
- ⑰ Seatwall
- ⑱ Poured-in-Place Surfacing
- ⑲ Water Harvesting Swale with Riparian Plants
- ⑳ Access Bridge
- ㉑ Boulder Climbers & Scramble
- ㉒ Group Spinner
- ㉓ Accessible Zipline
- ㉔ Accessible Group See-Saw
- ㉕ Balancing Logs and Boulders
- ㉖ Raised Play Structure with Shade
- ㉗ Concrete Paving
- ㉘ Ramp
- ㉙ Interactive Sound Play
- ㉚ Berliner DNA Climber
- ㉛ Large Accessible Play Structure with Integrated Shade
- ㉜ On-Street Parking



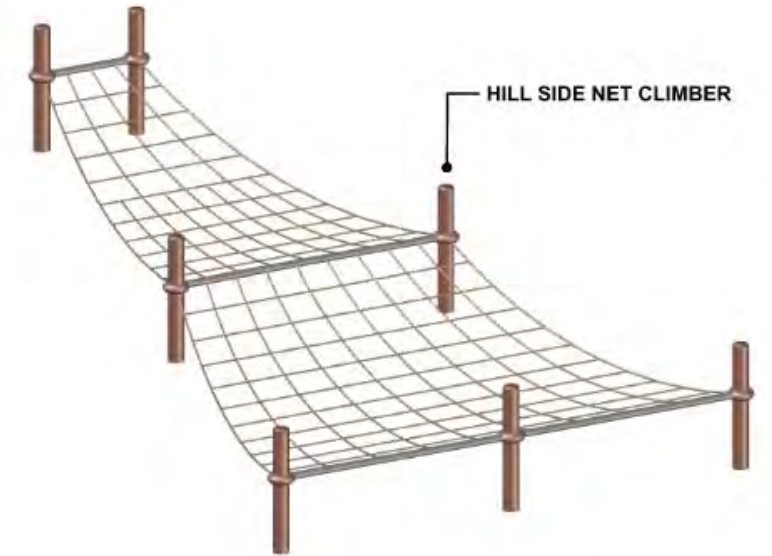
PLAY EQUIPMENT HIGHLIGHTS



Berliner Slide and Climber Combo with DNA Tower



Berliner Hillside Net Rope Climbers



Berliner Hammocks

Key Map

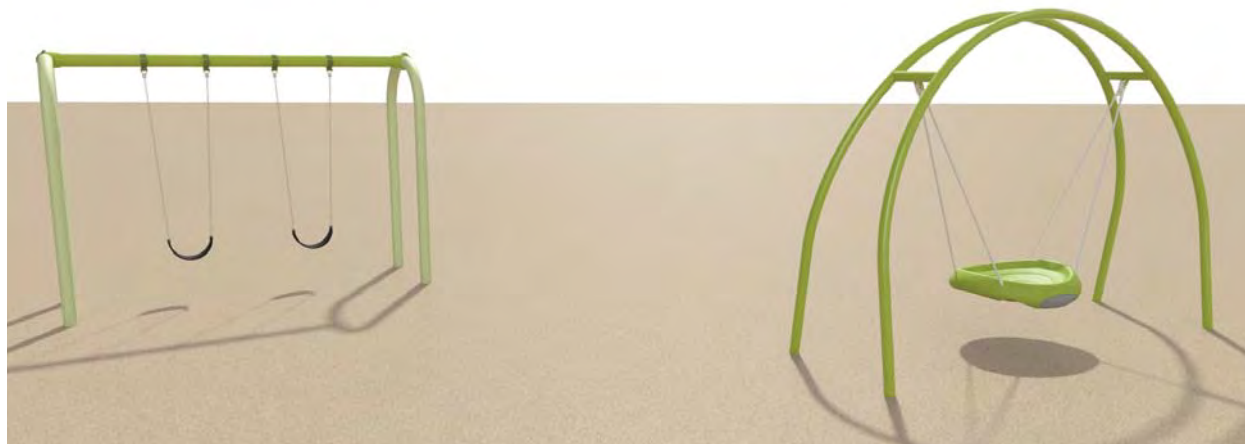


BOUNDLESS ADVENTURES PARK

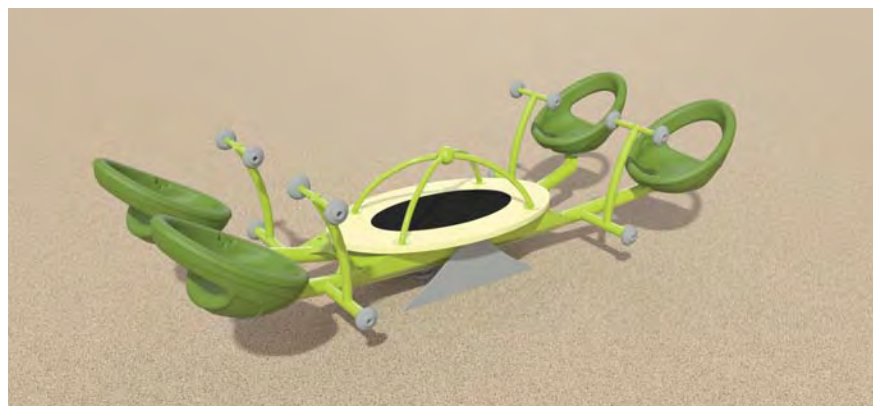
PLAY EQUIPMENT HIGHLIGHTS



Landscape Structures Accessible ZipKrooz



Landscape Structures Swings



Landscape Structures We-Saw



Landscape Structures Large Accessible Play Structure

Key Map

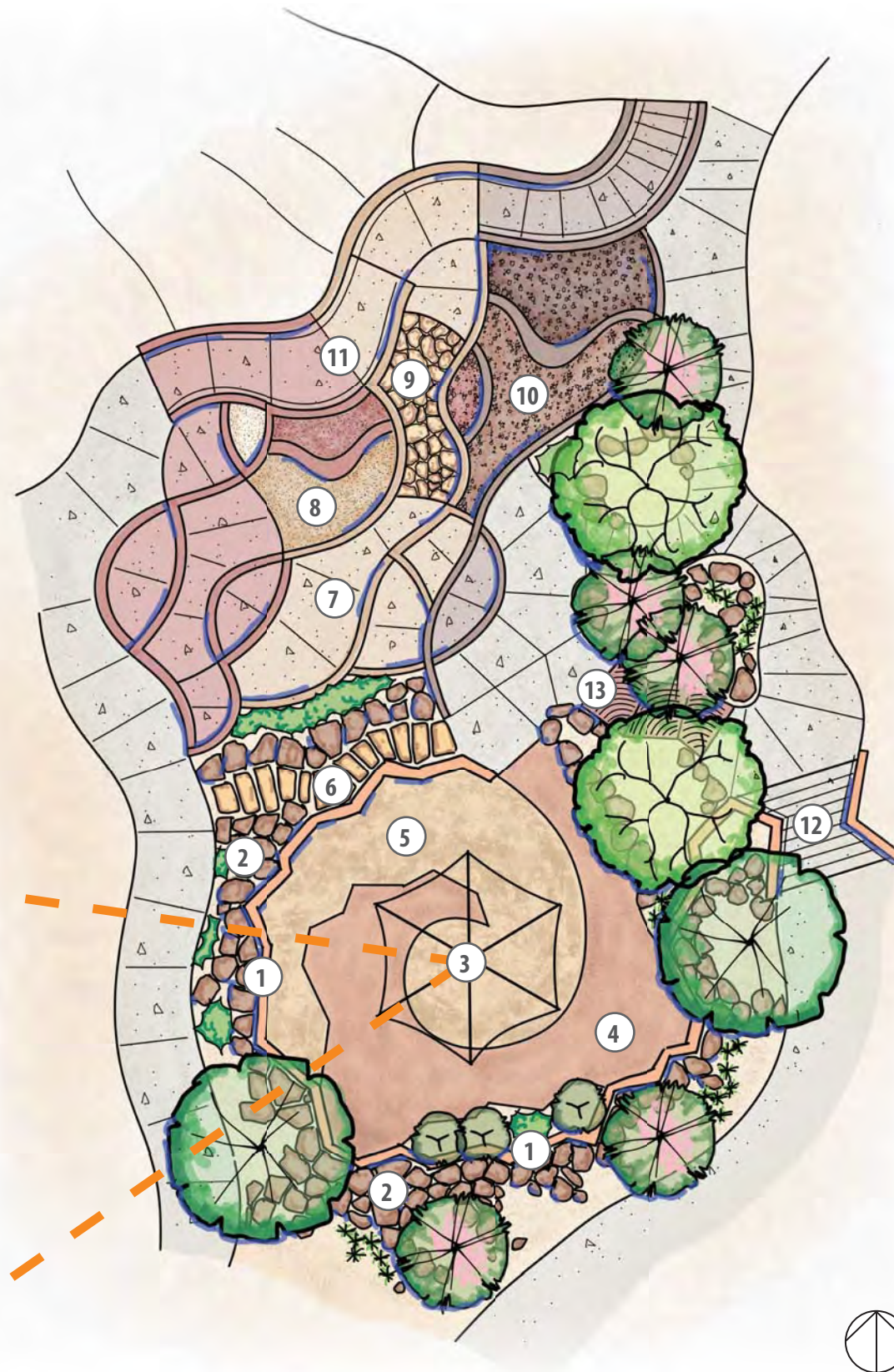


BOUNDLESS ADVENTURES PARK

MESA ENLARGEMENT



Berliner UFO M.9 Climber



Legend

- ① Butte Wall
- ② Talus Boulders
- ③ Net Climber
- ④ Poured-in-Place Surfacing
- ⑤ Engineered Wood Fiber Surfacing
- ⑥ Stone Steps
- ⑦ Terraced Concrete Steps-ups
- ⑧ Terraced Sand Play
- ⑨ Flagstone Path
- ⑩ Terraced Cobble Play
- ⑪ Accessible Ramp
- ⑫ Stairs
- ⑬ Metal Grate Bridge

Key Map



BOUNDLESS ADVENTURES PARK

MESA PRECEDENTS



NATURE PLAY VALLEY ENLARGEMENT



Legend

- ① Log Climbers
- ② Stump Climbers
- ③ Concrete Steppers
- ④ Embankment Slides
- ⑤ Poured-in-Place Surfacing
- ⑥ Engineered Wood Fiber Surfacing
- ⑦ Water Course with Sand Bottom and Rounded Boulders
- ⑧ Concrete Walk
- ⑨ Willow Tunnels
- ⑩ Stone Steps
- ⑪ Accessible Ramp
- ⑫ Boulder Terrace Plantings

Key Map



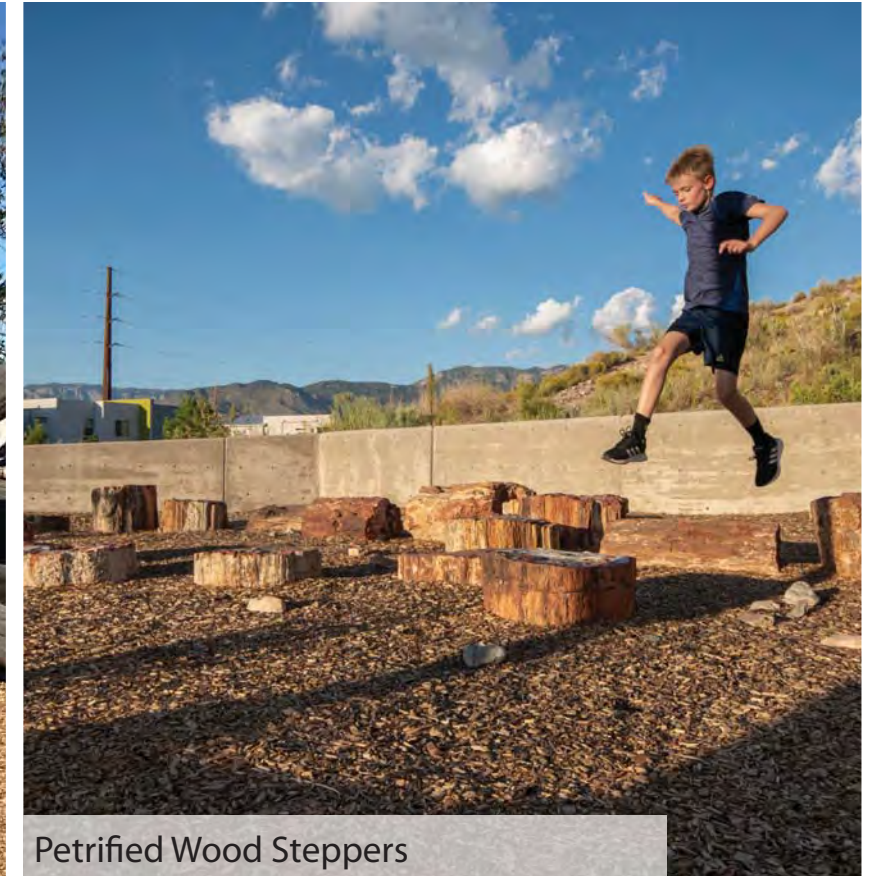
BOUNDLESS ADVENTURES PARK



Willow Tunnel



Presidio Tunnel Tops Park | San Francisco, CA



Petrified Wood Steppers



Juan Tabo Hills Park | Albuquerque, NM



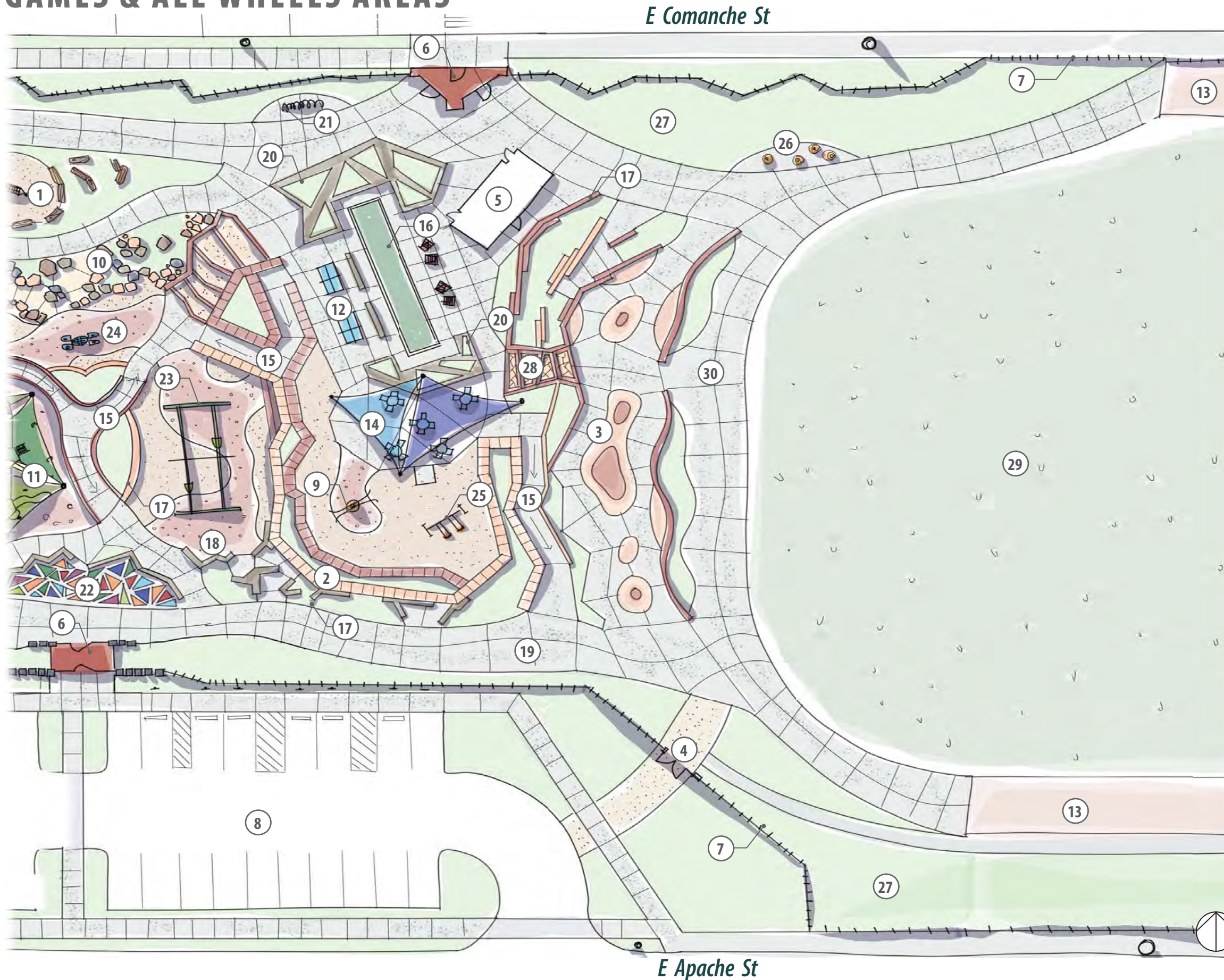
Barranca Elementary | White Rock, NM



Path through Vegetation

BOUNDLESS ADVENTURES PARK

GAMES & ALL WHEELS AREAS

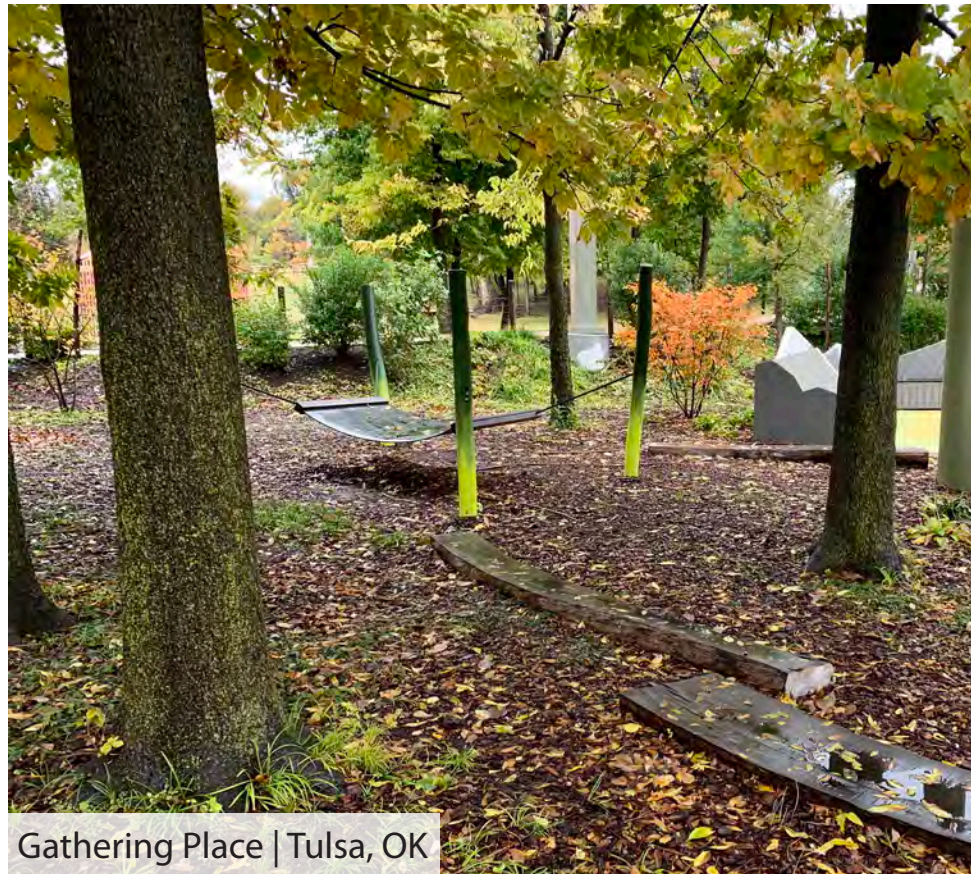


Legend

- ① Hammocks and Accessible Swings
- ② Gabion Retaining Walls
- ③ All Wheels Area: Skate and Wheelchair Waves
- ④ Emergency Access Gate & Road
- ⑤ Accessible Family Restroom with Hi/Low Table
- ⑥ Double-Gated Entry
- ⑦ Perimeter Fencing
- ⑧ Parking Lot
- ⑨ Disc Swing
- ⑩ Boulder Climbers & Scramble
- ⑪ Raised Play Structure with Shade
- ⑫ Small Courts and Table Games
- ⑬ Existing Track
- ⑭ Group Shade Structure and Accessible Tables
- ⑮ Ramp
- ⑯ Bocce Ball
- ⑰ Seatwall
- ⑱ Poured-in-Place Surfacing
- ⑲ Concrete Paving
- ⑳ Raised Planter with Seating
- ㉑ Bike Rack
- ㉒ Interactive Sound Play
- ㉓ Accessible Zipline
- ㉔ Accessible Group See-Saw
- ㉕ Belt Swings
- ㉖ Spinning Seats
- ㉗ Pollinator and Native Plant Garden
- ㉘ Steps
- ㉙ Existing Turf Field
- ㉚ New Walking Circuit

BOUNDLESS ADVENTURES PARK

HANGOUT GROVE, GAMING AREA & SKATABLE MOUNDS PRECEDENTS



Gathering Place | Tulsa, OK



Skatable Mounds

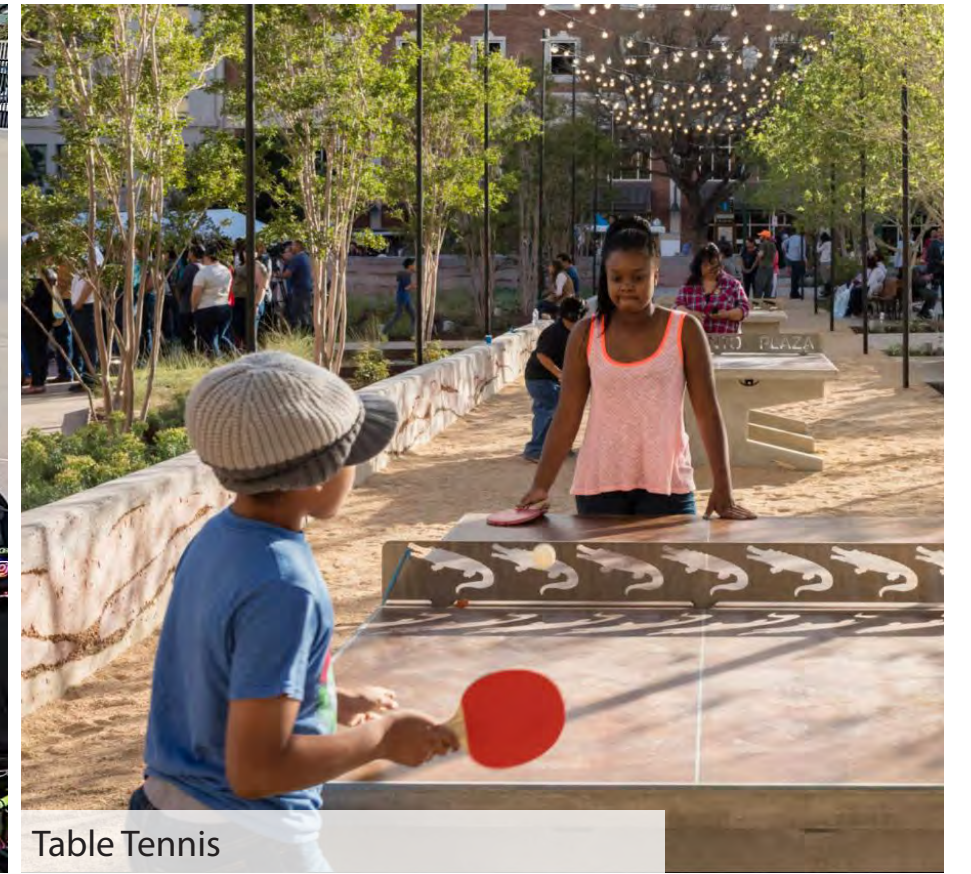
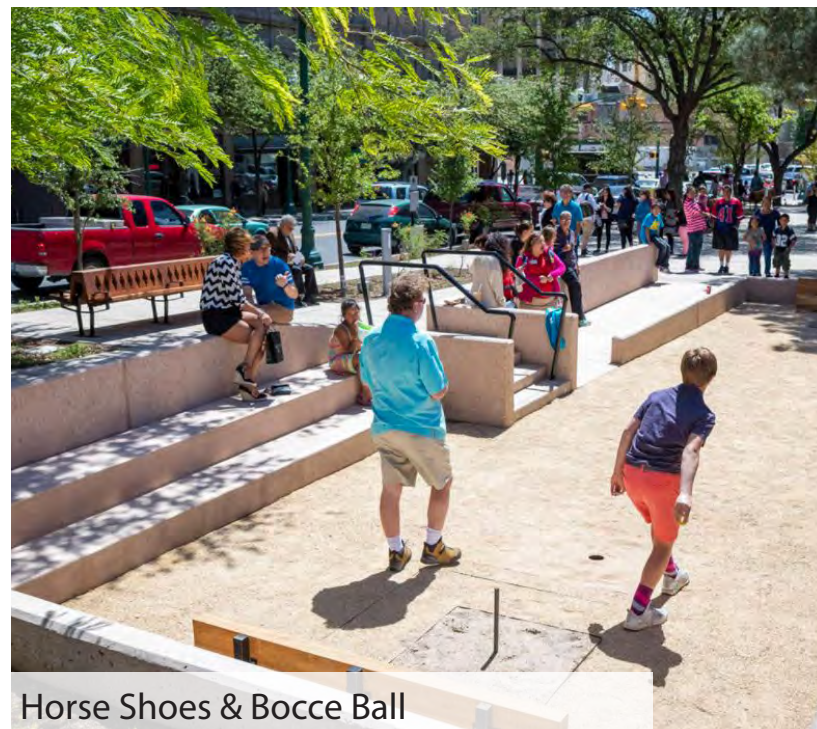


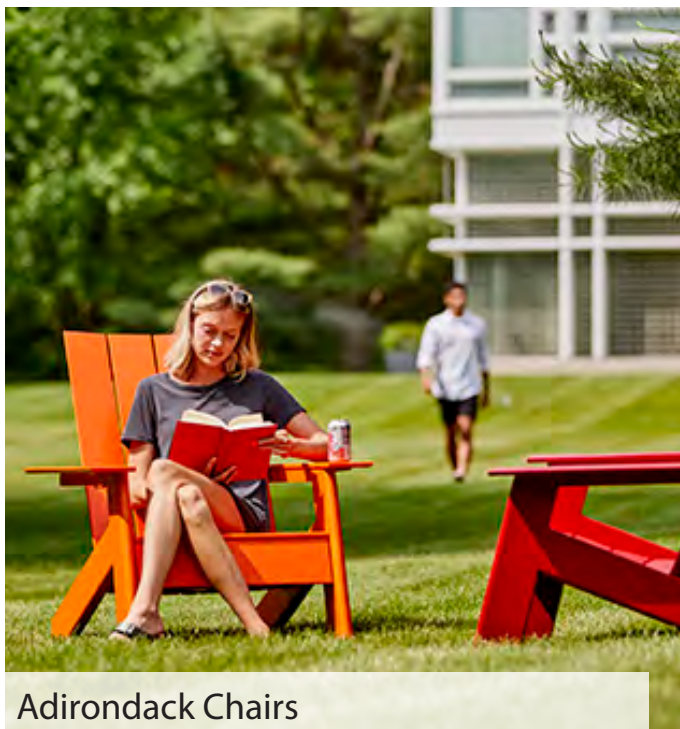
Table Tennis



Horse Shoes & Bocce Ball



Playful Seating



Adirondack Chairs

Key Map



BOUNDLESS ADVENTURES PARK

STAIRS, GABIONS & BOULDER SCRAMBLE PRECEDENTS



Anderson Heights Park | Albuquerque, NM



Riverview Park | Mesa, AZ



Pat Hurley Park | Albuquerque, NM



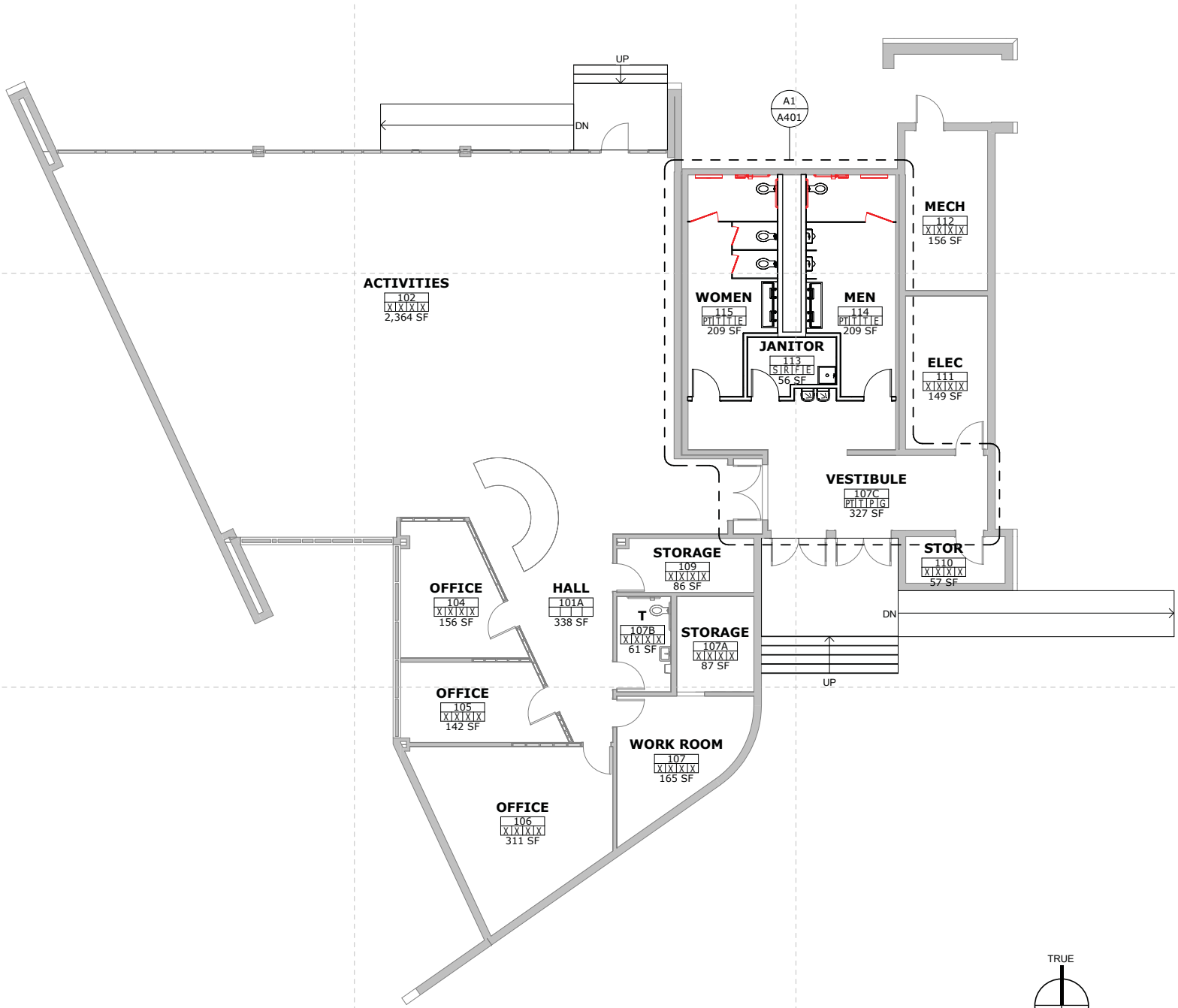
Large Boulders



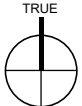
Four Hills Park | Albuquerque, NM

BOUNDLESS ADVENTURES PARK

RESTROOMS | EXISTING BUILDING RENOVATION

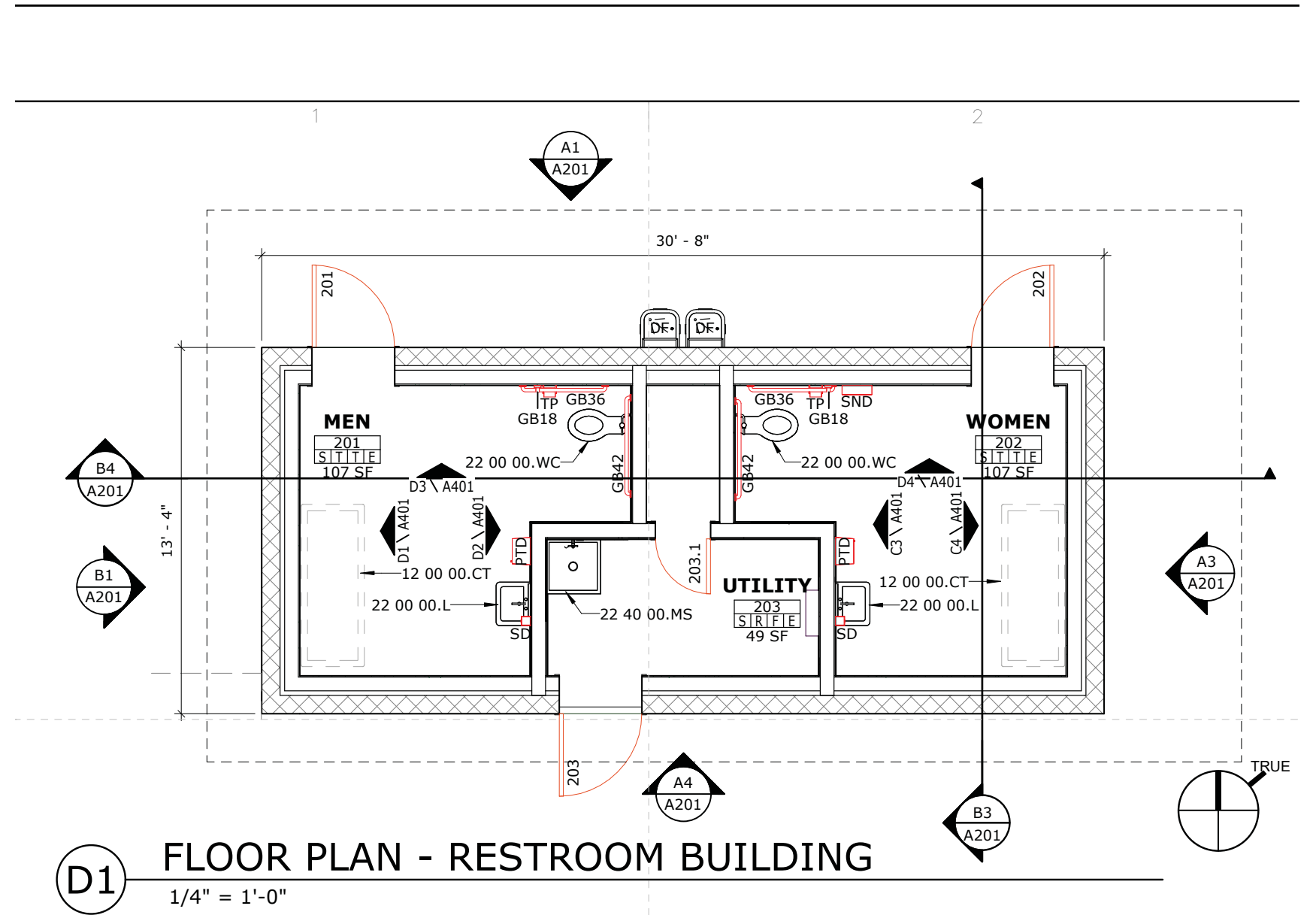
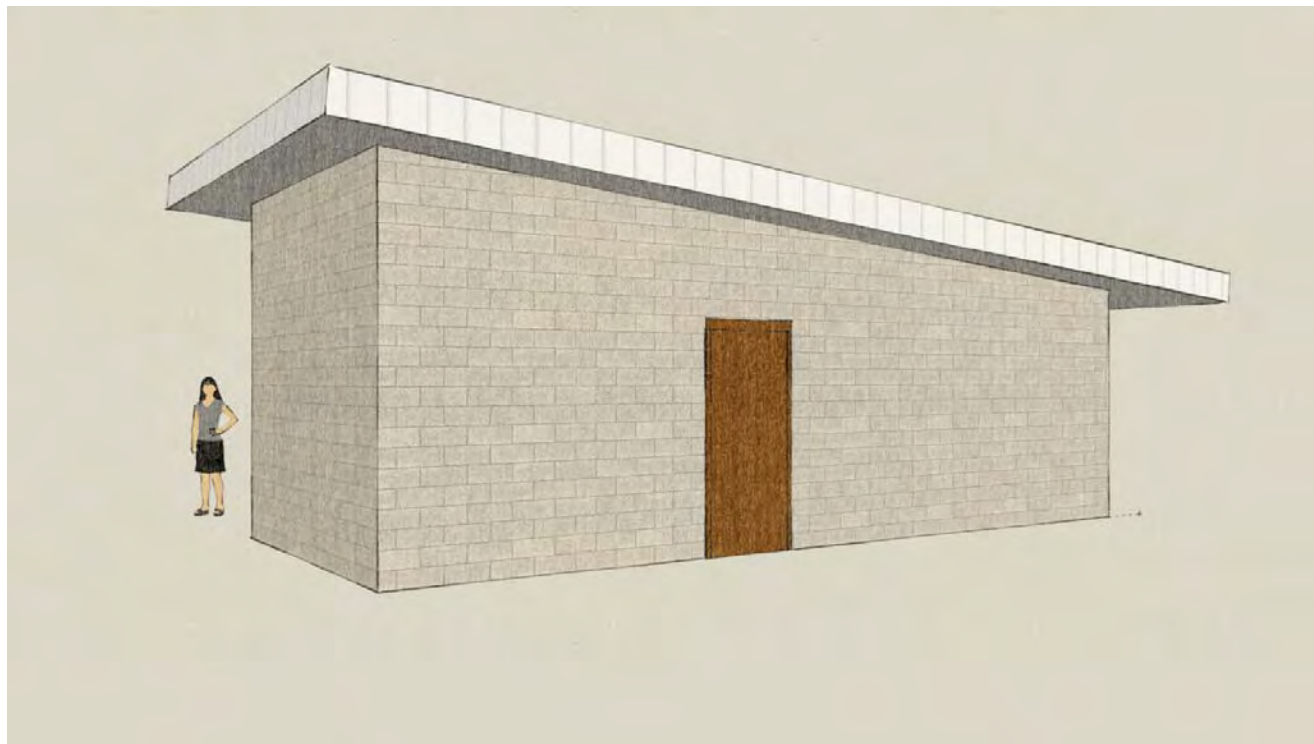


A1 FLOOR PLAN
1/8" = 1'-0"



BOUNDLESS ADVENTURES PARK

RESTROOMS | NEW BUILDING



NEXT

- *PLAND Collaborative to Begin the 65% Set Construction Documents.*
- *TAAP and the City of Farmington will continue Fundraising efforts.*
- *Identify collaborators and special focus groups for deeper dive into design solutions.*

THANK
YOU!